

SIX YEAR WARRANTY



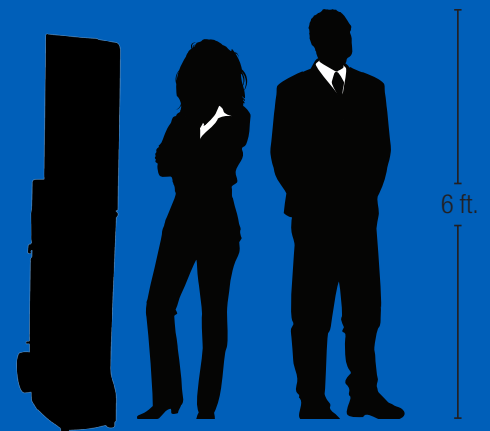
MADE IN THE USA

BIGFOOT

Portable Sound System

Perfect for...

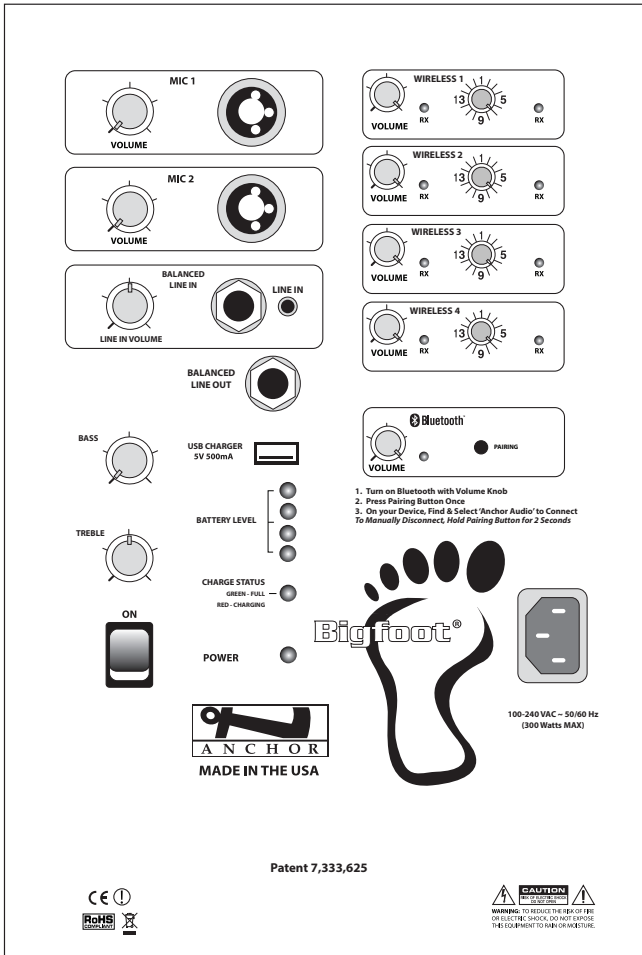
- Indoor & Outdoor Events
- Football Field
- Schools & Universities
- Sporting Events
- Marching Bands
- Graduations
- Large Auditoriums
- Assemblies
- House of Worship
- Parks & Recreation
- Auctions
- Military Training & Ceremonies
- Fitness Centers
- Parades & Community Celebrations
- Ceremonies
- Public Gatherings
- Weddings
- and more!



BIGFOOT LINE ARRAY

FEATURES

- Reaches crowds of 5,000+
- 130 dB of clear sound
- 400W AC/DC mode
- Up to four built-in wireless receivers
- Standard built-in Bluetooth
- Optional built-in CD/MP3 combo player
- Two universal microphone input jacks
- 3.5 mm AUX line input
- Onboard mic storage bag
- Durable enclosure with heavy duty wheels
- Built-in rechargeable batteries operate 6 - 8 hours on a single charge
- Five 8" neodymium woofers
- One neodymium compression driver
- Designed to cover a football field or large auditorium



(BIG-8000U4 Back Panel Shown)

Bigfoot Models

BIG-8000	Bigfoot with Bluetooth
BIG-8000U1	Bigfoot with Bluetooth & 1 wireless receiver
BIG-8000U2	Bigfoot with Bluetooth & 2 wireless receivers
BIG-8000U3	Bigfoot with Bluetooth & 3 wireless receivers
BIG-8000U4	Bigfoot with Bluetooth & 4 wireless receivers
BIG-8000C	Bigfoot with Bluetooth & CD/MP3 combo player
BIG-8000CU1	Bigfoot with Bluetooth, CD/MP3 combo player & 1 wireless receiver
BIG-8000CU2	Bigfoot with Bluetooth, CD/MP3 combo player & 2 wireless receivers
BIG-8000CU3	Bigfoot with Bluetooth, CD/MP3 combo player & 3 wireless receivers
BIG-8000CU4	Bigfoot with Bluetooth, CD/MP3 combo player & 4 wireless receivers
Wireless Microphones & Transmitters	
WH-8000	Wireless handheld microphone
WB-8000	Wireless beltpack transmitter (requires handsfree microphone) Microphone options include: Headband/HBM-TA4F, Collar/CM-60, Over-the-Ear/EM-TA4F, or Lapel/LM-60

Technical Specifications

Rated Power Output	400 watts AC/DC
Max SPL @ Rated Power	130 dB @ 1 meter
Battery	Three 12V sealed lead acid rechargeable, 9.0 AH Full recharge: approx 8 hrs
Frequency Response	100 Hz - 15 kHz ± 3dB
Wireless Range	150' line of sight
Line Output (post fader)	isolated, 600Ω, 1/4" phone
AC Power Reqs.	100 - 240 VAC, 50/60 Hz, 300W max
USB	5V 500mA
Dimensions Closed (HWD)	42.5" x 15.3" x 24" (108 x 38.9 x 61 cm)
Dimensions Opened (HWD)	68.5" x 15.3" x 24" (174 x 38.9 x 61 cm)
Base Model Weight	73.5 lbs / 33.3 Kg
Mic Inputs:	Lo-Z (1 KW), balanced, XLR 12 VDC condenser mic (phantom) power Hi-Z (10 KW), unbalanced, 1/4" phone balanced
Line In	balanced, 1/4" & 3.5mm stereo
Sensitivity For Rated Output	
Lo-Z Microphone	-52 dBV (2.5 mVrms)
Hi-Z Microphone	-43 dBV (7.5 mVrms)
Auxiliary (line)	-14 dBV (200 mVrms)

(Features & Specifications Subject to Change Without Notice)



AIR MODEL FEATURES

- One built-in transmitter that wirelessly connects to one or more Bigfoot AIR receiver speakers
- One built-in receiver that wirelessly connects to the Bigfoot AIR transmitting speaker
- Expandable to multiple Bigfoot AIR receiver speakers
- Easily connects to Assistive Listening
- ADA Compliant
- Built-in rechargeable batteries operate 6 - 8 hours on a single charge

**All other features are the same as the Bigfoot 8000 series except option of CD/MP3 combo player*



BIG-8000XU4



BIG-8000RU4

Bigfoot AIR Technical Specifications

AIR Frequency Range	902.000 - 928.000 MHz
Wireless Range	300'+ line of sight
Weight	73.5 lbs / 33.3 Kg

**All other features are the same as the Bigfoot 8000 series*

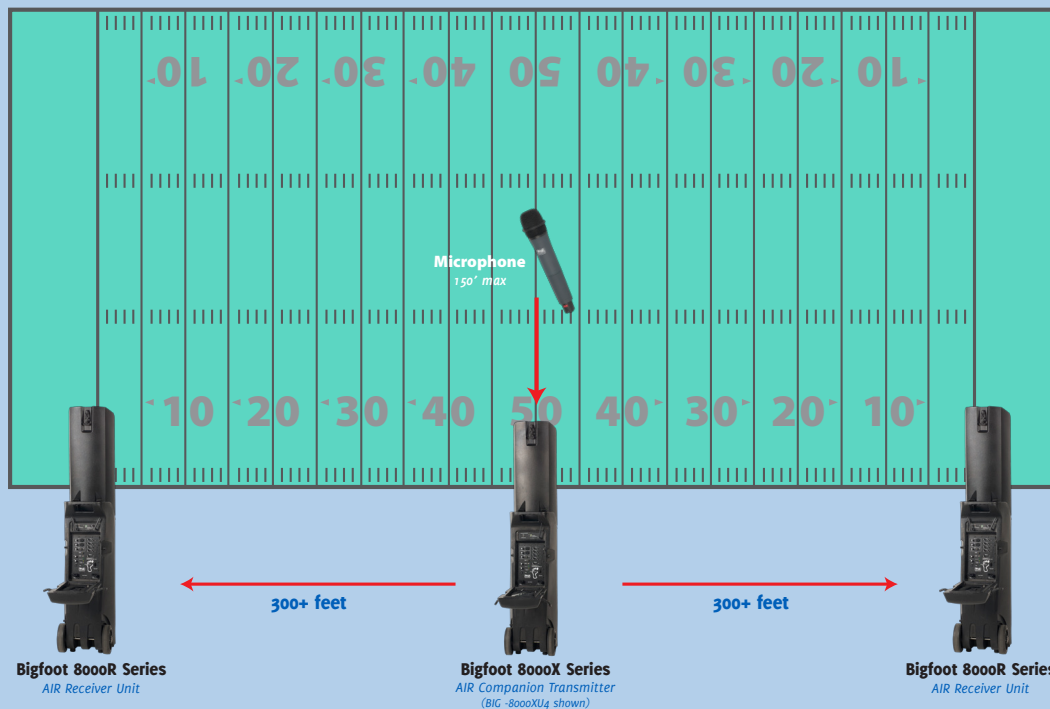
Bigfoot AIR Models

BIG-8000X	Bigfoot with Bluetooth & AIR wireless transmitter
BIG-8000XU1	Bigfoot with Bluetooth, AIR wireless transmitter, & 1 wireless receiver
BIG-8000XU2	Bigfoot with Bluetooth, AIR wireless transmitter, & 2 wireless receivers
BIG-8000XU3	Bigfoot with Bluetooth, AIR wireless transmitter, & 3 wireless receivers
BIG-8000XU4	Bigfoot with Bluetooth, AIR wireless transmitter, & 4 wireless receivers
BIG-8000R	Bigfoot with Bluetooth & AIR wireless receiver
BIG-8000RU1	Bigfoot with Bluetooth, AIR wireless receiver, & 1 wireless receiver
BIG-8000RU2	Bigfoot with Bluetooth, AIR wireless receiver, & 2 wireless receivers
BIG-8000RU3	Bigfoot with Bluetooth, AIR wireless receiver, & 3 wireless receivers
BIG-8000RU4	Bigfoot with Bluetooth, AIR wireless receiver, & 4 wireless receivers

(Features & Specifications Subject to Change Without Notice)



Anchor AIR System Arrangement



FREQUENTLY ASKED QUESTIONS

Q: How does the AIR wireless connection work?

A: Simple! The 8000X series (Bigfoot & Beacon) includes a built-in transmitter - as designated by the X. An 8000R series (Bigfoot & Beacon) includes a built-in receiver - as designated by the R. The transmitter and receivers operate on the 902 – 928 MHz frequency, with 100 user-selectable channels. When set to the same channel, the receivers pick up the audio signal from the transmitter.

Q: Can I use multiple AIR receiver speakers in one set up?

A: Yes, absolutely. Any 8000X series can transmit to an unlimited number of AIR receiver speakers. All units should be set to the same frequency to receive signal. When setting up your arrangement, be sure to point the systems facing the same direction – pointing the systems directly at one another may cause distortion. AIR units can be placed 300+ feet (or more in ideal conditions) from the transmitting main unit.

Q: I am experiencing interference on all channels. Can I connect with a cable instead of the wireless connection?

A: Yes! All Bigfoot and Beacon AIR units are main units, with either a transmitter or receiver(s) built-in. Main units can be daisy-chained to one another by using the line out to line in jack. The units must have charged batteries, and will not work if batteries are dead.

Q: What is the range of the AIR wireless connection?

A: Each AIR receiver speaker can be placed up to 300+ feet from the main unit transmitter. In ideal conditions, you can place the systems further, however, be aware of physical latency and/or interference. If you are using multiple AIR systems, be sure to center the main unit between all AIR companions.

Q: I am experiencing interference with my AIR wireless connection, what can I do?

A: Oh no! You have a few options. First, try to change the channel. There are 100 channels to choose from, so be sure to try various frequencies to find a clear channel. You should also double check that your speakers are close enough together to have a strong signal. Be sure all your batteries are fully charged. Additionally, verify your inputs all have a clear signal (such as a wireless microphone, cables, and Bluetooth). Lastly, you can try adjusting the external antennas for a better connection. These fixes may not work for everyone, as there are occasional signals which cannot be avoided (for example being close to a high-power cell tower). If none of these fixes work, please call us. We are happy to help!

Q: Since the Anchor Audio Assistive Listening Devices are also on 902 – 928 MHz, can they work together to create a simple and reliable ADA compliant sound system?

A: Actually, yes! All 8000X series units will transmit to the AIR companion speakers as well as the ALB-9000 Assistive Listening belt(s). Since all systems are shipped out by default on the 902.000 channel, simply power on your transmitter and receivers (belt(s) and AIR wireless companion), and you instantly have an ADA compliant sound system. Did you know that ADA requirements mandate compliant assistive listening systems for any theater using audio amplification or with a capacity of at least 50 audience members? Try this set up for the easiest solution.